



IONPURE® LX-HI INSTANT HOT WATER SANITIZABLE CONTINUOUS ELECTRODEIONIZATION (CEDI) MODULES

IONPURE LX-HI MODULE

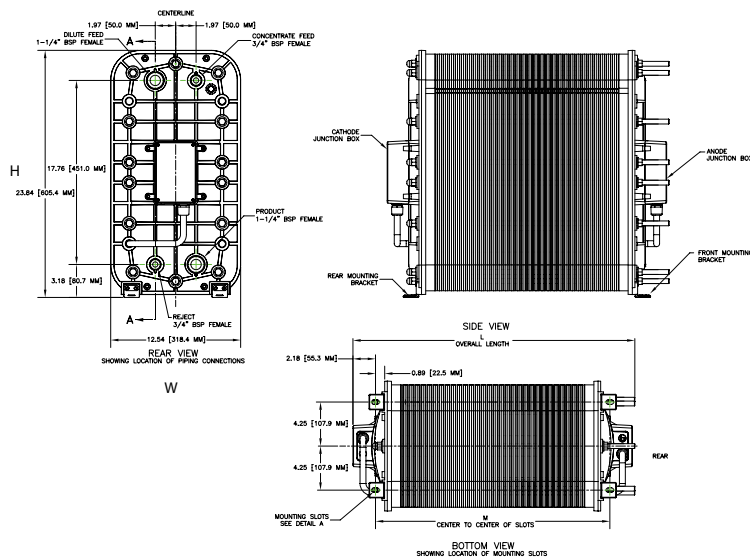
Hot water sanitization has been shown to be more effective than chemical sanitization for controlling microbial growth, primarily in the pharmaceutical and biotechnology industries and other applications where chemical-free, instant hot water sanitization is desired.

LX-HI modules are capable of continuous operation up to 140°F (60°C) allowing these modules to provide high quality water, in higher temperature applications than typical CEDI, such as steam generation in power applications, without regeneration downtime. Ease of operation, maximum reliability and low operating costs are signature features of Ionpure modules.

LX-HI Series Features

- Hot water sanitizable at 185°F/85°C ± 5°C
- Continuous operation up to 140°F (60°C)
- Patented technology for instant hot water capability - no ramp up/down required
- Higher sanitization pressure 30 psi/2.0 bar
- Double O-ring seal guarantees leak-free operation
- Proven performance after 150+ sanitizations
- Concentrate recirculation and brine injection not required
- Wetted materials of construction comply with FDA requirements

For additional information on our hot water sanitizable series of modules visit our website at www.ionpure.com.



OPERATING ENVIRONMENT

Installation should be indoors with no direct sunlight and should have a maximum ambient room temperature of 113°F (45°C).

QUALITY ASSURANCE STANDARDS

CE marked for compliance with low voltage directive. Each module is factory tested to meet strict industry standards and is manufactured in an ISO 9001 and ISO 14000 quality and environmental management system.

Halal certified. All Ionpure modules are manufactured in accordance with the Islamic Food and Nutrition Council of America standards (IFANCA), and will carry the Crescent M Halal logo.

Physical Specifications

| Item Number | Dimensions | | |
|-------------|----------------------|----------------------|----------------------|
| | L | H | W |
| LXM04HI-3 | 11.81" (300.0 mm) | 23.84" (605.5 mm) | 12.54" (318.5 mm) |
| LXM10HI-3 | 15.29" (388.6 mm) | 23.84" (605.5 mm) | 12.54" (318.5 mm) |
| LXM18HI-3 | 19.91" (505.7 mm) | 23.84" (605.5 mm) | 12.54" (318.5 mm) |
| LXM24HI-3 | 23.38" (593.9mm) | 23.84" (605.5 mm) | 12.54" (318.5 mm) |
| LXM30HI-3 | 27.42" (696.5mm) | 23.84" (605.5 mm) | 12.54" (318.5 mm) |
| LXM45HI-3 | 35.72" (907.3 mm) | 23.84" (605.5 mm) | 12.54" (318.5 mm) |

ORDERING DETAILS

LX-HI Series Modules

| Ordering Part Number | Model Number | Product Flow min. gpm (m ³ /hr) | Product Flow nominal gpm (m ³ /hr) | Product Flow max. gpm (m ³ /hr) | Shipping Weight [†] lbs (kg) | Operating Weight lbs (kg) |
|----------------------|--------------|--|---|--|---------------------------------------|---------------------------|
| W3T17316 | IP-LXM4HI-3 | 1.0 (0.22) | 2.0 (0.44) | 3.0 (0.67) | 140 (64) | 79 (36) |
| W3T17287 | IP-LXM10HI-3 | 2.5 (0.55) | 5.0 (1.1) | 7.5 (1.65) | 180 (82) | 122 (55) |
| W3T17293 | IP-LXM18HI-3 | 4.5 (1.1) | 9.0 (2.0) | 13.5 (3.1) | 215 (98) | 161 (73) |
| W3T17298 | IP-LXM24HI-3 | 6.3 (1.4) | 12.5 (2.8) | 18.8 (4.2) | 248 (113) | 197 (89) |
| W3T17304 | IP-LXM30HI-3 | 7.5 (1.65) | 15.0 (3.3) | 22.5 (5.11) | 286 (130) | 238 (108) |
| W3T226955 | IP-LXM45HI-3 | 11.3 (2.55) | 22.5 (5.1) | 33.8 (7.67) | 431 (196) | 325 (148) |

[†] includes shipping crate



210 Sixth Avenue, Suite 3300, Pittsburgh, PA 15222

+1 (866) 926-8420 (toll-free) +1 (978) 614-7111 (toll)

www.ionpure.com

Feed Water Specifications

| | |
|--|-------------------------|
| Feed Water Conductivity Equivalent, including CO ₂ and Silica | < 40 µS/cm |
| Temperature | 41 - 140° F (5 - 60° C) |
| Inlet Pressure | ≤ 100psi (6.9 bar) |
| Maximum Total Chlorine (as Cl ₂) | < 0.02 ppm |
| Iron (as Fe) | < 0.01 ppm |
| Manganese (as Mn) | < 0.01 ppm |
| Sulfide (S ⁻) | < 0.01 ppm |
| pH | 4 - 11 |
| Total Hardness (as CaCO ₃) | < 1.0 ppm |
| Dissolved Organics (TOC as C) | < 0.5 ppm |
| Silica (SiO ₂) | < 1.0 ppm |

Typical Module Performance

Operating Parameters

| | |
|--|-----------------------------|
| Typical Recovery | 90 - 95% |
| Maximum Feed Pressure | 100 psi (6.9 bar) |
| DC Voltage* | 0 - 600 |
| DC Amperage | 0 - 10 |
| Pressure Drop Range at Nominal Flow | 20 - 30 psi (1.4 - 2.1 bar) |
| Maximum Feed Temperature | 140°F (60°C) |
| Sanitization Temperature at 30 psi (2.0 bar) | 185°F (85°C) |

Typical Product Water Quality

| | |
|------------------------------------|-----------------------------------|
| Product Conductivity | < 0.1 µS/cm |
| Silica (SiO ₂) Removal | 90 - 99%, depending on feed water |

Note: Actual performance may be determined using the IP-Pro projection software available from Ionpure.
* Voltage required depends on module size

Ionpure is a trademark of Evoqua, its subsidiaries or affiliates, in some countries.

All information presented herein is believed reliable and in accordance with accepted engineering practices. Evoqua makes no warranties as to the completeness of this information. Users are responsible for evaluating individual product suitability for specific applications. Evoqua assumes no liability whatsoever for any special, indirect or consequential damages arising from the sale, resale or misuse of its products.

© 2018 Evoqua Water Technologies LLC Subject to change without notice ION-LXHI-DS-0818